

## Y2 Summer Term: Information Organiser

This organiser is to help you understand a bit more about what your child will be learning this half term. It would support your child to discuss some of the vocabulary we will be covering and complete some of the home task ideas.

### Recap:

- The name of the nurse who changed nursing in The Victorian Period is F\_\_\_\_\_ N\_\_\_\_\_.
- What words do you know about Islam? What is the Easter Story?
- What do plants need to help them to grow?
- Name: The Oceans and Continents of The World.

### This term in:

#### PE

Real PE. Net and Wall Skills, Athletics

#### DT

Sewing / Applique - making a bookmark.

**Moving Vehicles** - making moving vehicles from junk materials and wooden axles / wheels.

#### Music

Friendship - songs and playing together.

#### Computing

Making music and pictograms using digital software.

### Religious Education: What is the 'good news' Christian's share that Jesus brings?

**Gospel** – 'good news'

**Disciple** – follower of Jesus.

We will look at stories told in the Bible about **Forgiveness, Peace, Charity and Confession**. The children will relate these themes to their own lives.

In **PSHE** we will be discussing ideas around the theme, 'Good to be Me,' including different types of family, what makes us different and how to cope with difficult situations.

### **Pedestrian Training.**

All classes will complete pedestrian training to remind and reinforce road safety rules.

### Science: Living Things and Their Habitats

Key vocabulary to know:

**habitat** – a natural home or environment of an animal.

**species** – a group of animals with similar characteristics.

**animal adaptation** – special skills / features that make animals suited to their habitat.

**micro-habitat** – a small habitat.

**mini-beast** – a small invertebrate animal such as an insect or a spider.

### Food Chains

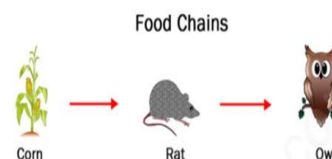
**producer** – plant

**consumer** – eats another part of the food chain.

**omnivore** – eats meat and vegetables.

**herbivore** – eats vegetables.

**carnivore** – eats meat.



### Geography:

Key vocabulary to know:

Relating to the world map: Equator, Continent, Ocean, Capital City, Tropical, Temperate, Polar, United Kingdom, Europe,

Our focus will be on comparing Brazil and the United Kingdom, including:

**Positional Language** - Compass points.

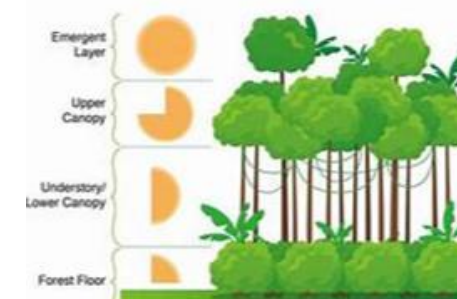
**Physical features** - Features created by nature.

**Human features** - Features created by man.

**Rainforest** - a dense forest, rich in vegetation found in a tropical climate.

**Climate** - the weather conditions in an area over a long period.

**Aerial View** - viewpoint seen from above.



**English:** Read your book at least 3 times a week. Talk about the story, characters, predictions, etc. **Use Spelling Shed** – new lists and games each week! Keep practising the common exception words for Year 2.

**Maths:** Log on to **TT Rockstars**. We will be practising the 5x and 2 x tables in particular. Keep practising reading the time to fifteen minute intervals (on an analogue clock). Use dice, playing cards any opportunity to practise adding and subtracting numbers within 20 for speedy recall.